



# MAULANA AZAD COLLEGE

DEPARTMENT OF ZOOLOGY



*Calendar*  
**2022**



# MAULANA AZAD COLLEGE

DEPARTMENT OF ZOOLOGY



## The Tibetan fox or Tibetan sand fox (*Vulpes ferrilata*)

Least Concern: Truly endemic fox to the high Tibetan Plateau, Ladakh plateau, Nepal, China, Sikkim, and Bhutan, up to elevations of about 5,300 m (17,400 ft)]. Photograph was captured from North Sikkim by Dr.Amitava Majumder (Research Associate Zoological Survey of India, Kolkata) Former Postgraduate Student of Zoology Department (2009-2011).

## JANUARY

2022

SUN	MON	TUE	WED	THU	FRI	SAT	SUN	MON	TUE	WED	THU	FRI	SAT
						1	2	3	4	5	6	7	8
9	10	11	12	13	14	15	16	17	18	19	20	21	22
23	24	25	26	27	28	29	30	31					

## HOLIDAYS IN JANUARY

❖ New Year's Day	1st Jan	Sat
❖ Birthday of Vivekananda	12th Jan	Wed
❖ Makar Sankranti	14th Jan	Fri
❖ Birthday of Netaji	23rd Jan	Sun
❖ Foundation Day of Calcutta University	24th Jan	Mon
❖ Magotsab	25th Jan	Tue
❖ Republic Day	26th Jan	Wed



# MAULANA AZAD COLLEGE

DEPARTMENT OF ZOOLOGY



## Osprey also known as Sea hawk (*Pandion haliaetus*)

Least Concern: Diurnal, piscivorous and second most widely distributed raptor species, cosmopolitan range]. Photograph captured from Purbasthali, Purba Bardhaman, West Bengal by Mr. Adil Choudhury, First Semester Postgraduate Student of Zoology Department (2021-23).

## FEBRUARY

2022

### HOLIDAYS IN FEBRUARY

SUN	MON	TUE	WED	THU	FRI	SAT	SUN	MON	TUE	WED	THU	FRI	SAT
	1	2	3	4	5	6	7	8	9	10	11	12	
13	14	15	16	17	18	19	20	21	22	23	24	25	26
27	28												

❖ Saraswati Puja	4th-6th Feb	Fri-Sun
❖ Birth Day of Panchanan Barma	14th Feb	Mon



# MAULANA AZAD COLLEGE

DEPARTMENT OF ZOOLOGY



## Red Ghost Crab (*Ocypode macrocera*)

Common shore crabs widely distributed throughout the tropical and subtropical regions. Deep burrows in the intertidal zone. These crabs are a real treat to the eye. Photograph captured from Henry Island, Bakkhali, West Bengal by Mr. Adil Choudhury, First Semester Postgraduate Student of Zoology Department (2021-23).

### MARCH

2022

#### HOLIDAYS IN MARCH

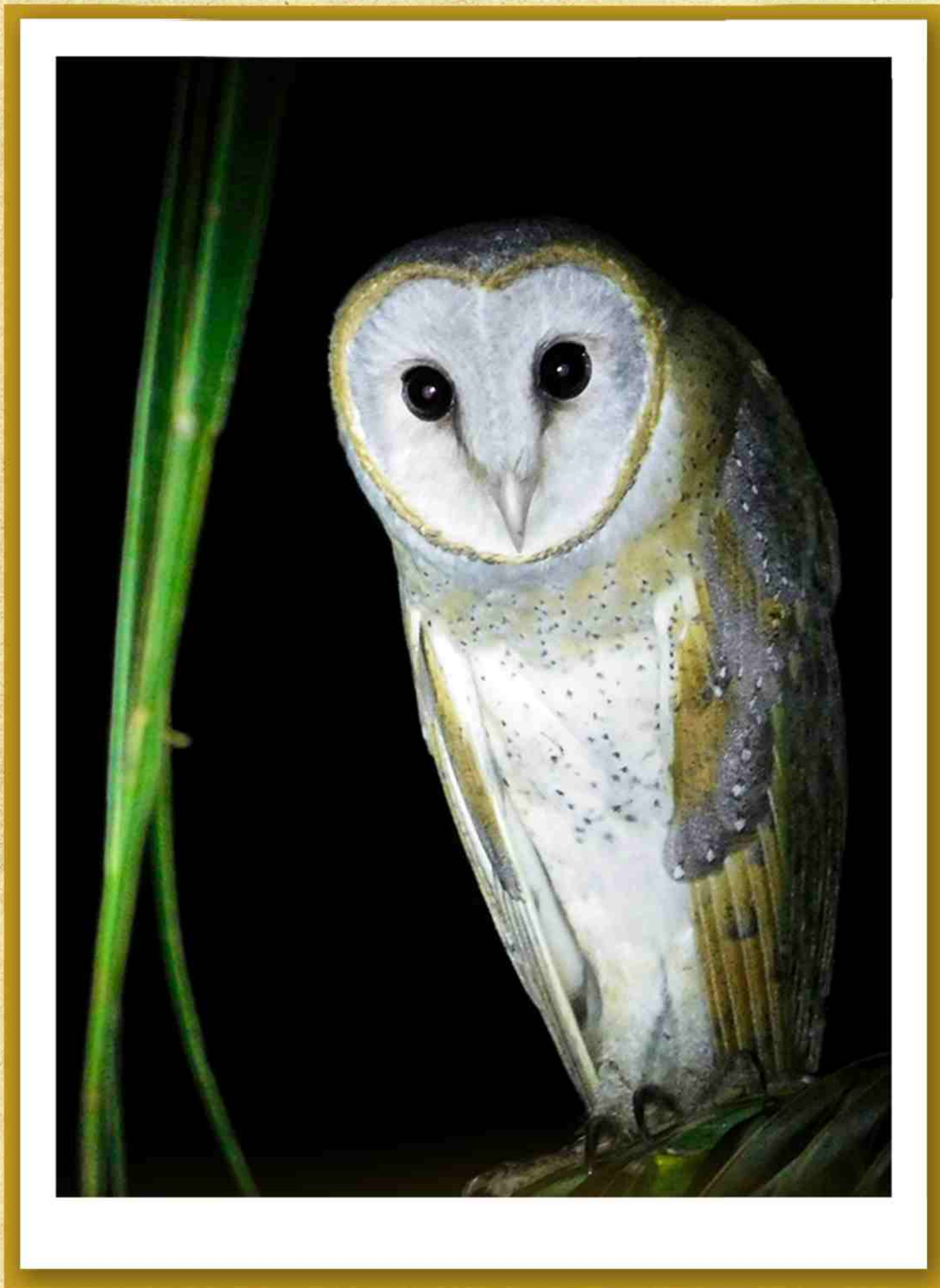
SUN	MON	TUE	WED	THU	FRI	SAT	SUN	MON	TUE	WED	THU	FRI	SAT
	1	2	3	4	5	6	7	8	9	10	11	12	
13	14	15	16	17	18	19	20	21	22	23	24	25	26
27	28	29	30	31									

❖ Shivaratri/Shabemiraj	1st Mar	Tue
❖ Shab-E-Barat/Doljatra	18th Mar	Fri
❖ Holi	19th Mar	Sat



# MAULANA AZAD COLLEGE

## DEPARTMENT OF ZOOLOGY



### Barn owl (*Tyto alba*)

Least Concern; Nocturnal bird. Most widespread land bird species in the world, occurring on every continent except Antarctica. Photograph captured from Katwa, Purba Bardhaman, West Bengal by Mr. Adil Choudhury, First Semester Postgraduate Student of Zoology Department (2021-23)

## APRIL

2022

SUN	MON	TUE	WED	THU	FRI	SAT	SUN	MON	TUE	WED	THU	FRI	SAT
				1	2	3	4	5	6	7	8	9	
10	11	12	13	14	15	16	17	18	19	20	21	22	23
24	25	26	27	28	29	30							

### HOLIDAYS IN APRIL

❖ Chaitra Snkranti/B. R. Ambedkar' Birthday/Mahavir Janyanti	14th Apr	Thu
❖ Good Friday/Bengali New Year's Day	15th Apr	Fri
❖ Easter Saturday	16th Apr	Sat
❖ Jumat-UI-Wida	29th Apr	Fri
❖ Shab-E-Qadar	30th Apr	Sat



# MAULANA AZAD COLLEGE

DEPARTMENT OF ZOOLOGY



## The gray slender loris (*Loris lydekkerianus*)

Near Threatened: Native primate of India and Sri Lanka and inhabits subtropical and tropical dry forests and subtropical or tropical moist lowland forests. It is threatened by habitat loss. Photograph was captured by Dr.Amitava Majumder (Research Associate Zoological Survey of India, Kolkata), Former Postgraduate Student of Zoology Department (2009-2011).

**MAY**

**2022**

SUN	MON	TUE	WED	THU	FRI	SAT	SUN	MON	TUE	WED	THU	FRI	SAT
1	2	3	4	5	6	7	8	9	10	11	12	13	14
15	16	17	18	19	20	21	22	23	24	25	26	27	28
29	30	31											

### HOLIDAYS IN MAY

❖ May Day	1st May	Sun
❖ Summer Vacation	1st May-21st June	Sun-Tue
❖ Eid-UI-Fitr	3rd-5th May	Tue-Thu
❖ Birthday of Rabindranath Tagore	9th May	Mon
❖ Buddha Purnima	16th May	Mon





# MAULANA AZAD COLLEGE

DEPARTMENT OF ZOOLOGY



## Indian Elephant (*Elephas maximus indicus*)

Endangered, fast becoming threatened: Distributed throughout India, except Central India. Photograph captured from Manas National Park, Assam by Dr Abhishek Mukherjee, Assistant Professor of Zoology Department (2017- till date).

**JULY**

**2022**

**HOLIDAYS IN JULY**

SUN	MON	TUE	WED	THU	FRI	SAT	SUN	MON	TUE	WED	THU	FRI	SAT
					1	2	3	4	5	6	7	8	9
10	11	12	13	14	15	16	17	18	19	20	21	22	23
24	25	26	27	28	29	30	31						

❖ Rathayatra	1st July	Fri
❖ Eid-Ud-Zoha	10th-12th July	Sun-Tue





# MAULANA AZAD COLLEGE

DEPARTMENT OF ZOOLOGY



## Indian roller (*Coracias benghalensis*)

Least Concern: It is found West Asia to the Indian subcontinent. Often found perched on roadside trees and wires, it is common in open grassland and scrub forest habitats, and has adapted well to human-modified landscapes. Photograph captured from Tadoba National Park, Maharashtra by Mr. Archisman Bhattacharjee, Former Postgraduate Student of Zoology Department (2018-2020).

## AUGUST

## 2022

SUN	MON	TUE	WED	THU	FRI	SAT	SUN	MON	TUE	WED	THU	FRI	SAT
	1	2	3	4	5	6	7	8	9	10	11	12	13
14	15	16	17	18	19	20	21	22	23	24	25	26	27
28	29	30	31										

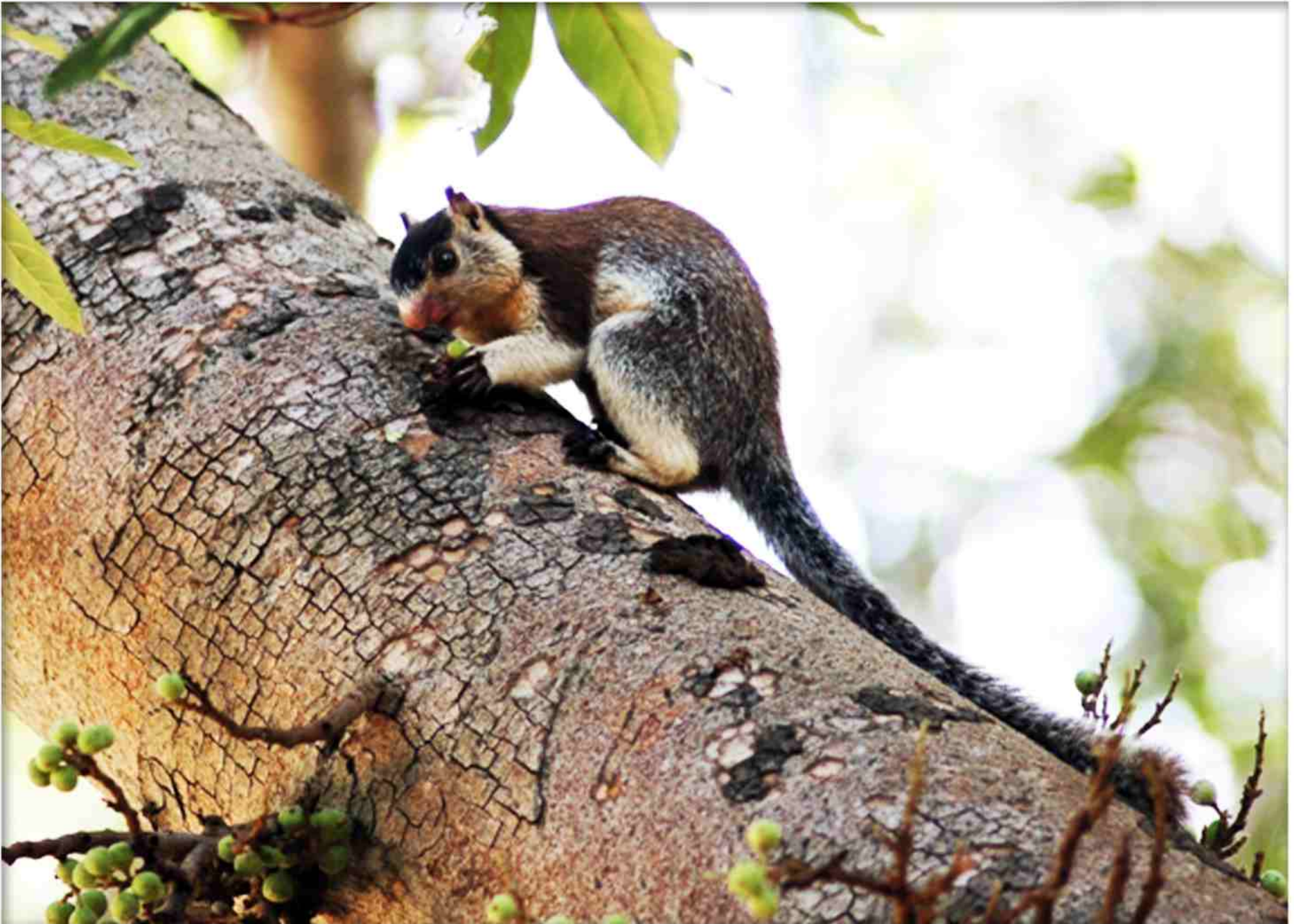
### HOLIDAYS IN AUGUST

❖ Muharram	9th-10th Aug	Tue-Wed
❖ Rakhi Purnima	11th Aug	Thu
❖ Independence Day	15th Aug	Mon
❖ Janmastami	19th Aug	Fri



# MAULANA AZAD COLLEGE

DEPARTMENT OF ZOOLOGY



## Grizzled Giant Squirrel (*Ratufa macroura*)

Near Threatened: Large tree squirrel restricted to Western Ghats of Tamil Nadu and Kerala. Photograph captured from Chinnar Wildlife Sanctuary, Kerala by Dr. Tarak N Khan, Former Associate Professor of Zoology Department (2001–2014).

### SEPTEMBER

2022

SUN	MON	TUE	WED	THU	FRI	SAT	SUN	MON	TUE	WED	THU	FRI	SAT
				1	2	3	4	5	6	7	8	9	10
11	12	13	14	15	16	17	18	19	20	21	22	23	24
25	26	27	28	29	30								

### HOLIDAYS IN SEPTEMBER

❖ Viswakarma Puja	17th Sep	Sat
❖ Akhri Chahar Shamba	21st Sep	Wed
❖ Mahalaya	25th Sep	Sun
❖ Puja Vacation	26th Sep–2th Nov	Mon-Sat



# MAULANA AZAD COLLEGE

DEPARTMENT OF ZOOLOGY



## Nilgiri Tahr (*Nilgiritragus hylocrius*)

Endangered: Restricted to the Western Ghats from Nilgiris to Kanyakumari Hills. Photograph captured from Eravikulam National Park, Kerala by Dr. Tarak N Khan, Former Associate Professor of Zoology Department (2001 – 2014).

## OCTOBER

2022

SUN	MON	TUE	WED	THU	FRI	SAT	SUN	MON	TUE	WED	THU	FRI	SAT
						1	2	3	4	5	6	7	8
9	10	11	12	13	14	15	16	17	18	19	20	21	22
23	24	25	26	27	28	29	30	31					

## HOLIDAYS IN OCTOBER

❖ Gandhi Birthday	2nd Oct	Sun
❖ Fateha-Dwaz-Daham	9th Oct	Sun
❖ Durga Puja & Lakshmi Puja	2nd-10th Oct	Sun-Mon
❖ Kali Puja & Bhatriidwitiya	24th-27th Oct	Mon-Thu
❖ Chhat Puja	30th Oct	Sun-Mon



# MAULANA AZAD COLLEGE

## DEPARTMENT OF ZOOLOGY



### Sarus Crane (*Antigone antigone*)

Vulnerable: Large non migratory crane found in parts of the Indian subcontinent, Southeast Asia, and Australia. Breeding season is during the rainy season, when the pair builds an enormous nest "island," a circular platform of reeds and grasses]. Photograph captured from Bharatpur, Rajasthan by Dr Anirban Sinha (Assistant Professor, N D College Howrah), Former Postgraduate Student of Zoology Department (2005-2007).

## NOVEMBER

2022

SUN	MON	TUE	WED	THU	FRI	SAT	SUN	MON	TUE	WED	THU	FRI	SAT
		1	2	3	4	5	6	7	8	9	10	11	12
13	14	15	16	17	18	19	20	21	22	23	24	25	26
27	28	29	30										

### HOLIDAYS IN NOVEMBER

❖ Jagatdhattri Puja	2nd Nov	Wed
❖ Fateha-Yaaz-Daham	6th Nov	Sun
❖ Birthday of Guru Nanak	8th Nov	Tue
Maulana Azad's Birth Day	11th Nov	Fri
Birth Day of Birsa Munda	15th Nov	Tue



# MAULANA AZAD COLLEGE

DEPARTMENT OF ZOOLOGY



## Indian Wild Dog or Dhole (*Cuon alpinus*)

Endangered: Sparsely distributed throughout Indian Subcontinent with fast declining populations mainly due to habitat loss. Photograph captured from Pench National Park, Maharashtra by Sri. Dipankar Sengupta, Former Associate Professor of Zoology Department (1997–2013).

**DECEMBER**

**2022**

**HOLIDAYS IN DECEMBER**

SUN	MON	TUE	WED	THU	FRI	SAT	SUN	MON	TUE	WED	THU	FRI	SAT
				1	2	3	4	5	6	7	8	9	10
11	12	13	14	15	16	17	18	19	20	21	22	23	24
25	26	27	28	29	30	31							

❖ Christmas Vacation

25th-31st Dec

Sun-Sat